

CLARKSVILLE

FIFTH & WALSH

AUSTIN, TX

FIFTH & WALSH

5&W

COFFEE
HOUSE

BOLDLY AUSTIN

Fifth & Walsh's upscale, yet welcoming, atmosphere perfectly reflects Austin's energetic lifestyle, while capturing Clarksville's unique local character.

195,707 RSF

Total building size

174,449 RSF

Office space

21,258 SF

Retail space





FIFTH & WALSH
1200 West 5th Street, Austin TX 78703



GROUND LEVEL LOBBY AND RETAIL
connect to the suburban urban streetscape and feature vibrant textures and finishes.



LIVELY COMMON AREAS

include two intimate, green-filled courtyards, ideal for connecting, collaborating, or simply relaxing.



PRIVATE OUTDOOR DECKS

provide a personal oasis for your employees to enjoy a moment of respite.



FLEXIBLE OUTDOOR SPACES

Numerous exterior patios, architectural catwalks, and artistic paseos blend the outdoors and indoors, creating the perfect spots for working sessions or casual meetups.



SHADED COMMUNITY TERRACE

provides a place for meetings and corporate events and a landing spot to work and reenergize, all overlooking the dramatic Downtown skyline.



REFINED OFFICE LOBBY

perfectly sets the tone from the moment you enter with a warm and sophisticated atmosphere, simplified access, onsite security, and concierge services.



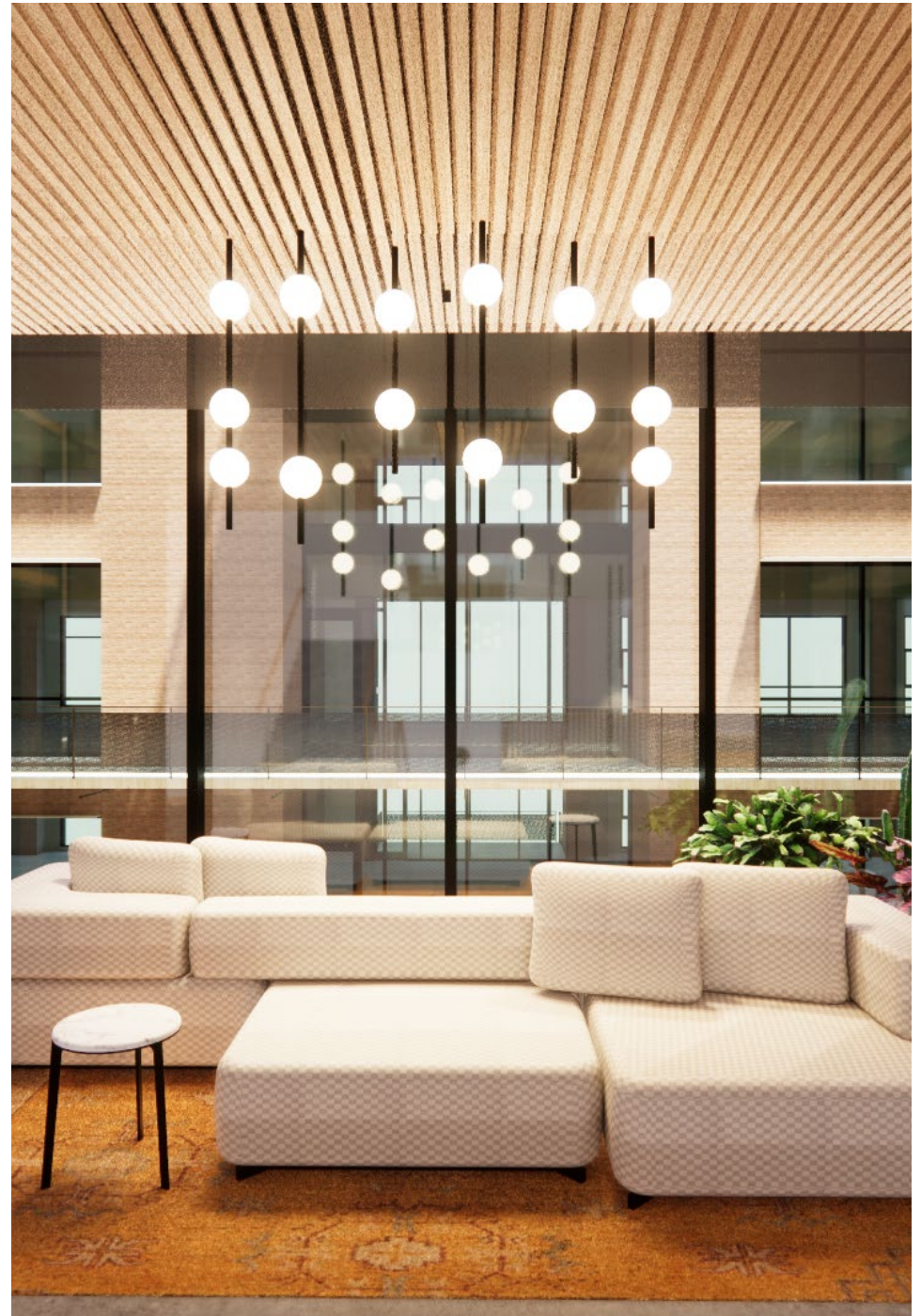
STATE OF THE ART CONFERENCE ROOM

perfect for those offsite meetings, investor presentations, brainstorming exercises, corporate training sessions, and social events.



OFFICE ELEVATOR LOBBY

streamlines the entry experience with direct access from the garage to your office floor and additional stairway access.





BUILDING SIZE

Total size: 195,707 RSF
Office: 174,449 RSF
Retail: 21,258 SF

PARKING

4 levels structured subterranean
527 space garage
Office: 2.37 permits /
1,000 SF lease

FLOOR-TO-FLOOR
HEIGHTS

Levels 2-5: 14'
Level 1: 18' - 19.5'

ELEVATORS

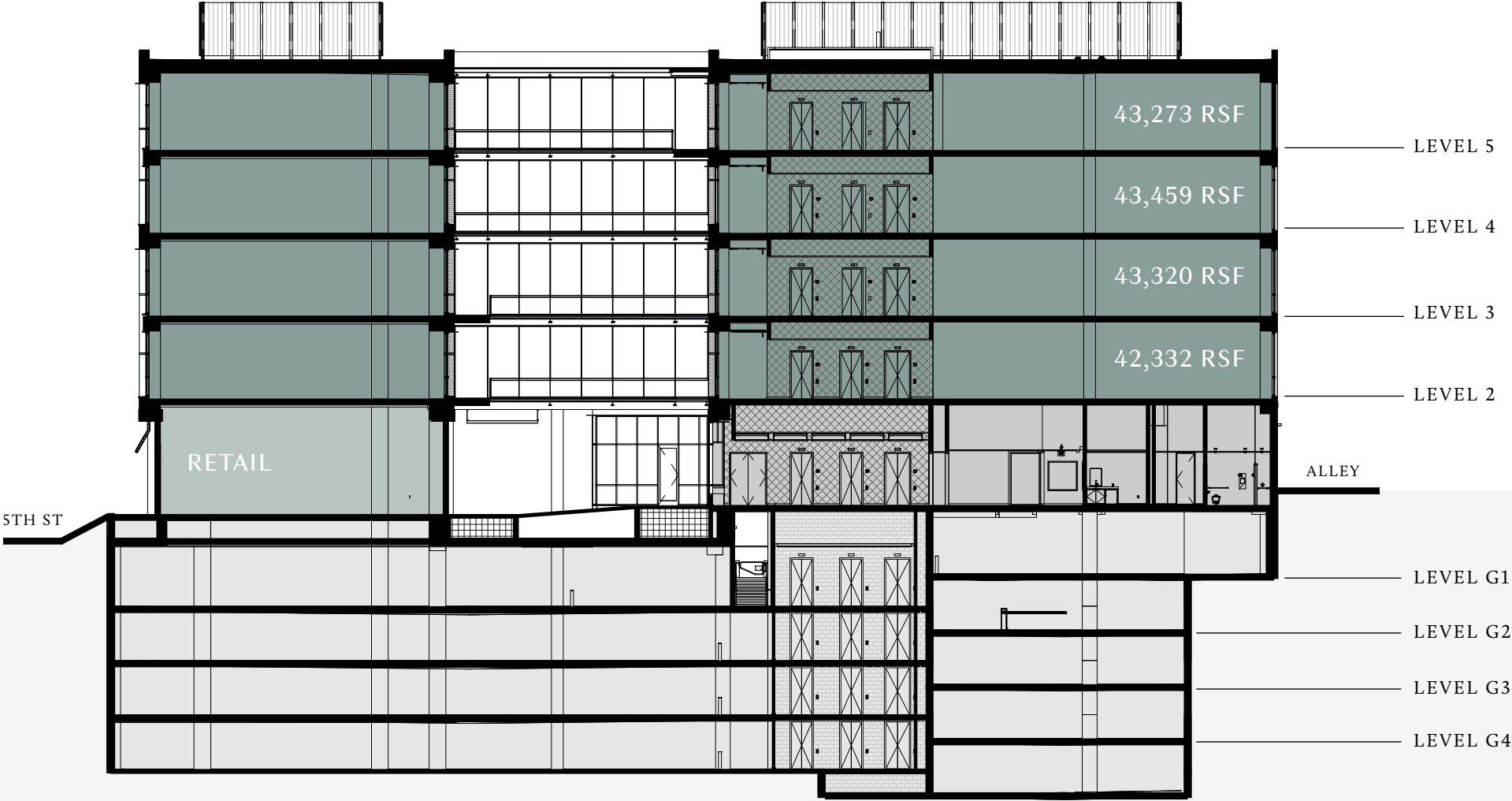
3 office elevators (1 freight)
1 retail elevator
Direct access from garage to
office floor

SUSTAINABILITY

Targeting LEED Silver
3-Star Austin Green Building

ARCHITECTS

Lake | Flato Architects
Studio8



□ Parking □ Lobby/Amenities □ Retail □ Office Space

FIRST FLOOR AMENITIES

- 1

RESTAURANT, COFFEE, AND RETAIL
- 2

DEDICATED CONFERENCE ROOM
- 3

SPA-LIKE GYM AND LOCKER ROOMS
- 4

SECURED BIKE STORAGE
- 5

WELLNESS / MOTHERS ROOM

6

COURTYARDS AND GREEN SPACES

7

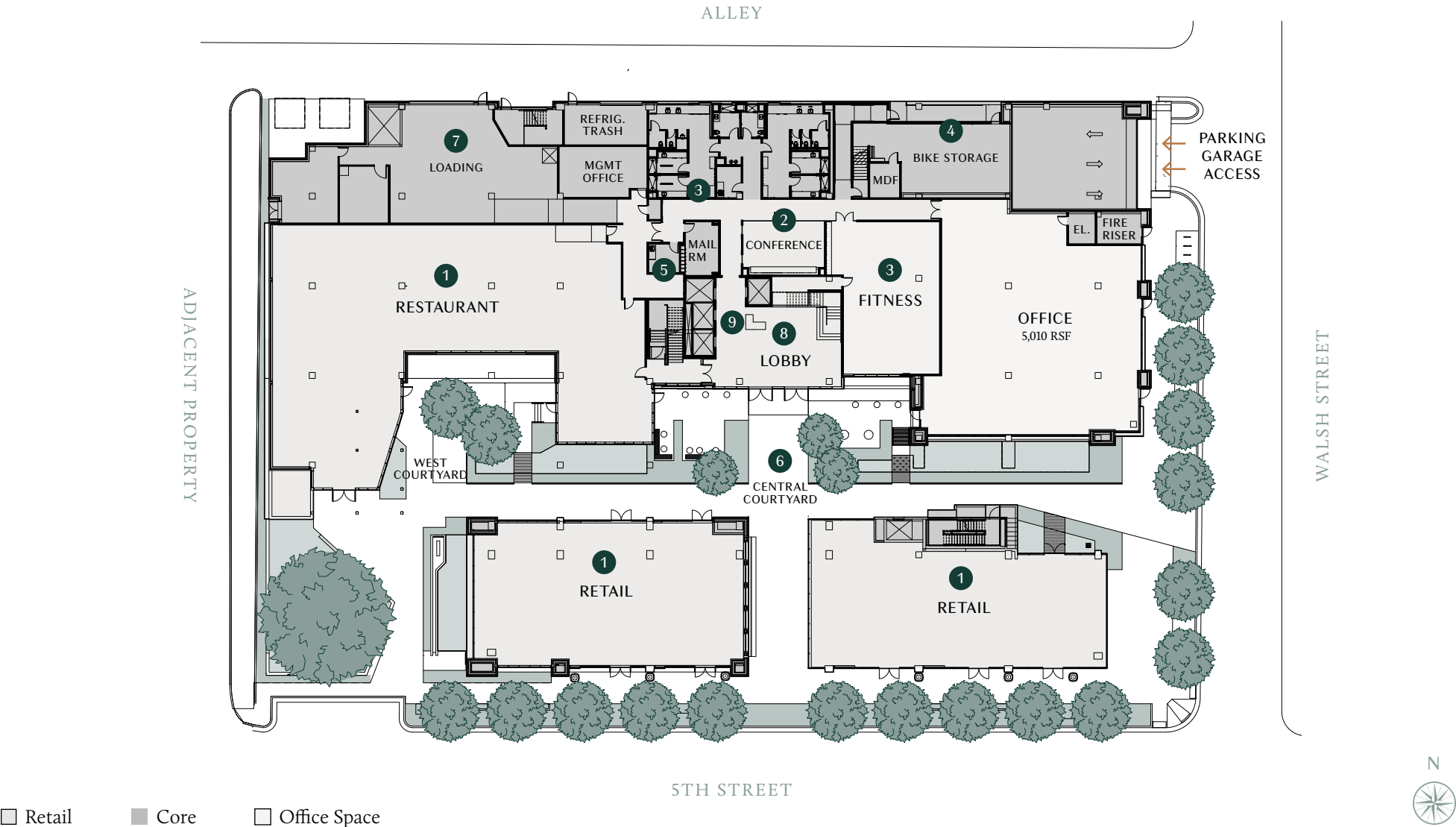
DEDICATED LOADING AREA

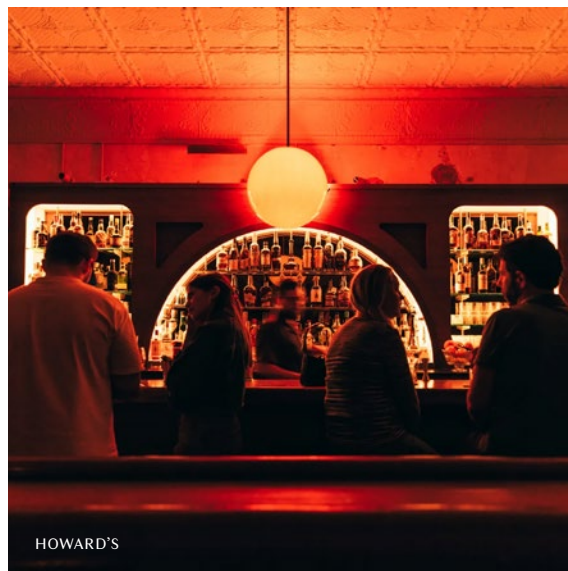
8

SEPARATE DEDICATED OFFICE ELEVATORS AND LOBBY

9

LOBBY SECURITY



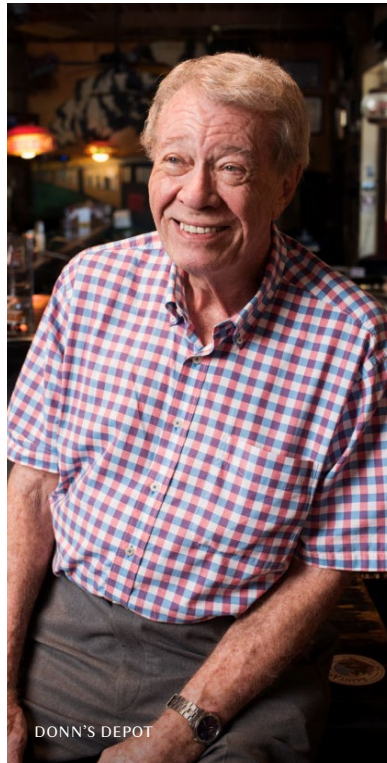


THE LOCAL'S LOCAL

Clarksville is walking distance from some of Austin's best restaurants and retail.



Stylish bungalows mingle with classic, upscale restaurants and one-of-a-kind retail to create an engaging and authentic vibe.





PECAN SQUARE CAFE



EL ARROYO



EL ARROYO



BAR PEACHED



BAR PEACHED

Photo credit: Inkedfingers



24 DINER



24 DINER

Clarksville's buzzing streets draw foodies, artists, and professionals alike to experience Austin's most authentic area.



ANN AND ROY BUTLER HIKE AND BIKE TRAIL

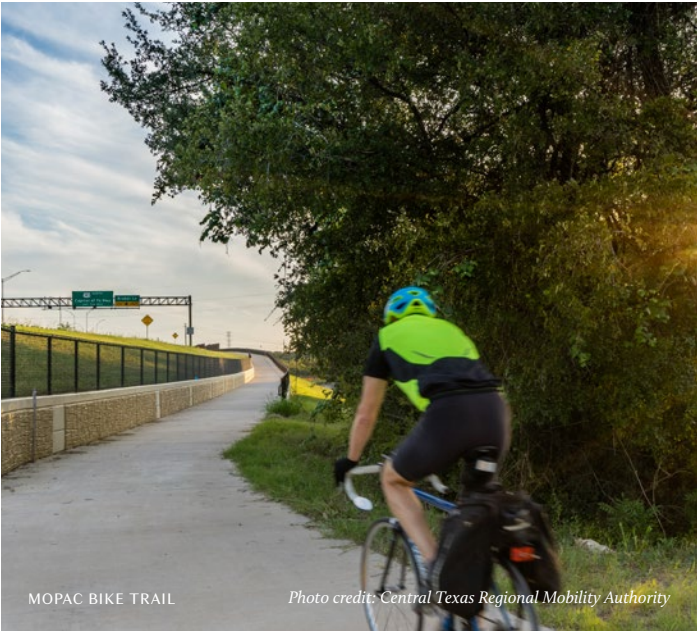


DEEP EDDY POOL *Photo credit: Austin Parks Foundation*

Discover a lively outdoor scene in Clarksville, surrounded by Austin's great parks, trails, and striking natural features.

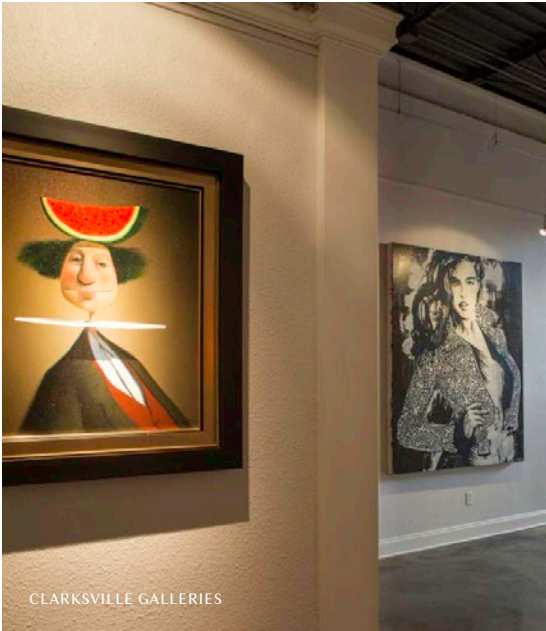


ZILKER PARK



MOPAC BIKE TRAIL

Photo credit: Central Texas Regional Mobility Authority



CLARKSVILLE GALLERIES



LADY BIRD LAKE

Photo credit: Johannes Scheem

● RESTAURANTS & BARS

24 Diner
Amy's Ice Cream
Bar Peached
Better Half Coffee & Cocktails
Clark's Oyster Bar
Deep Eddy Cabaret
Devil May Care
Donn's Depot
El Arroyo
Fresa's 9th & Lamar
Frozen Rolls Creamery
Galaxy Cafe
Jeffrey's
Josephine House
JuiceLand
Lin Asian Bar + Dim Sum
Mean Eyed Cat
Medici Roasting
Nekter Juice Bar
Nightcap
Pecan Square Café
Phoebe's Downtown
Pool Burger
QI Modern Asian Kitchen
Starbucks
Sushi Zushi
Swedish Hill
Taquero Mucho
Whole Foods
Z"Tejas

TRAILS & BIKE PATHS

— Ann and Roy Butler Hike and Bike Trail
— Shoal Creek Greenbelt

○ SERVICES & SHOPPING

Anthropologie
Bella Salon
Book People
ByGeorge
Crimson Hair & Skin
Free People
Geiser Barbering
Hair House ATX
Happy Salon & Spa
Jackson Ruiz Salon
Lululemon
Outdoor Voices
Paper Source
REI
West Chelsea Contemporary
West Elm

● FITNESS

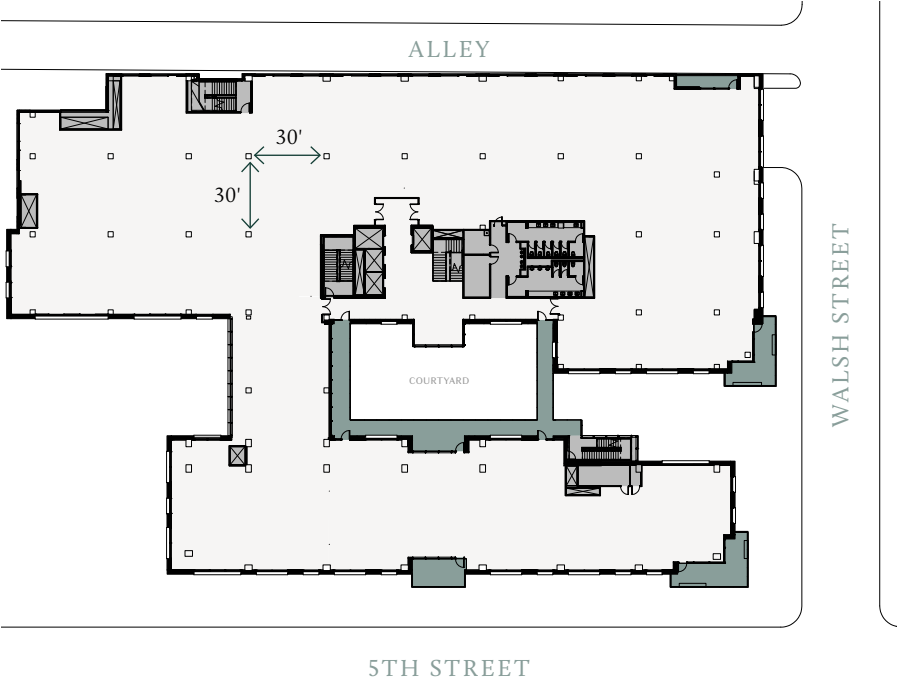
ADAPT Fitness
Align Austin West barre3
Black Swan Yoga – Orchard
Castle Hill Fitness Gym & Spa
Castle Hill Pilates Studio
CorePower Yoga
CrossFit Central Downtown
Cyclebar
Generator Athlete Lab
Knockout Austin
Lifetime Fitness
PURE Yoga Downtown
Somaspace – Classical Pilates
TLS ATX Global

In the heart of Downtown Austin's west end, Fifth & Walsh is located in the historic Clarksville district — the city's newest emerging retail and lifestyle destination.

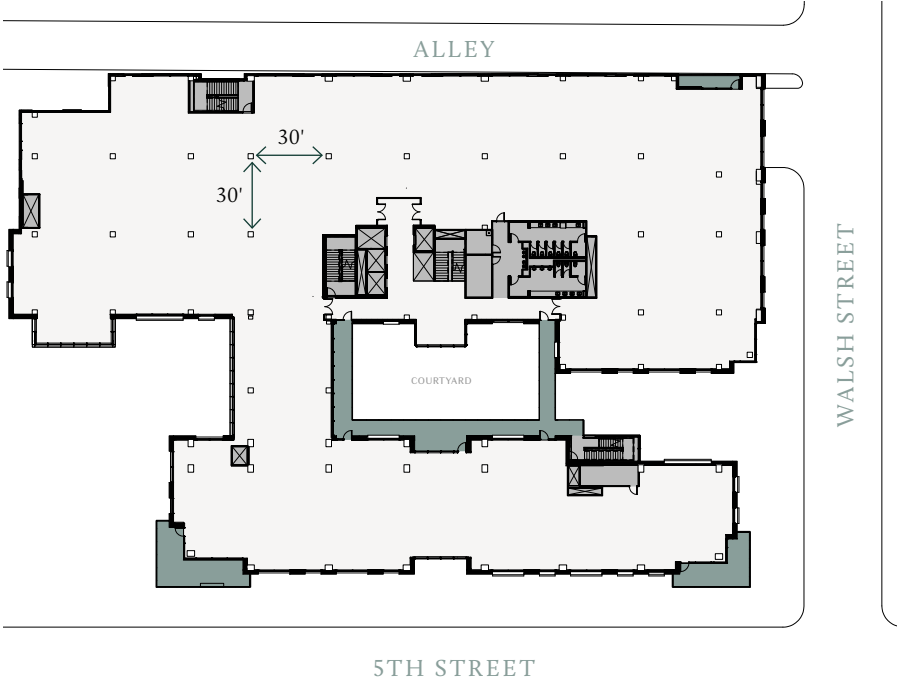
93 WALK SCORE
83 BIKE SCORE



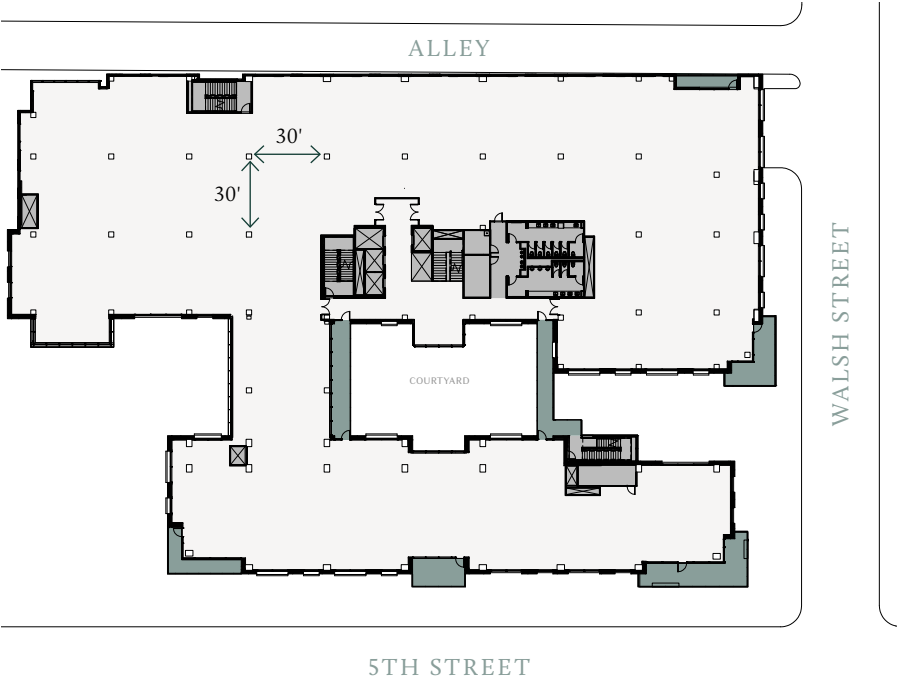
FLOOR 2
43,273 RSF



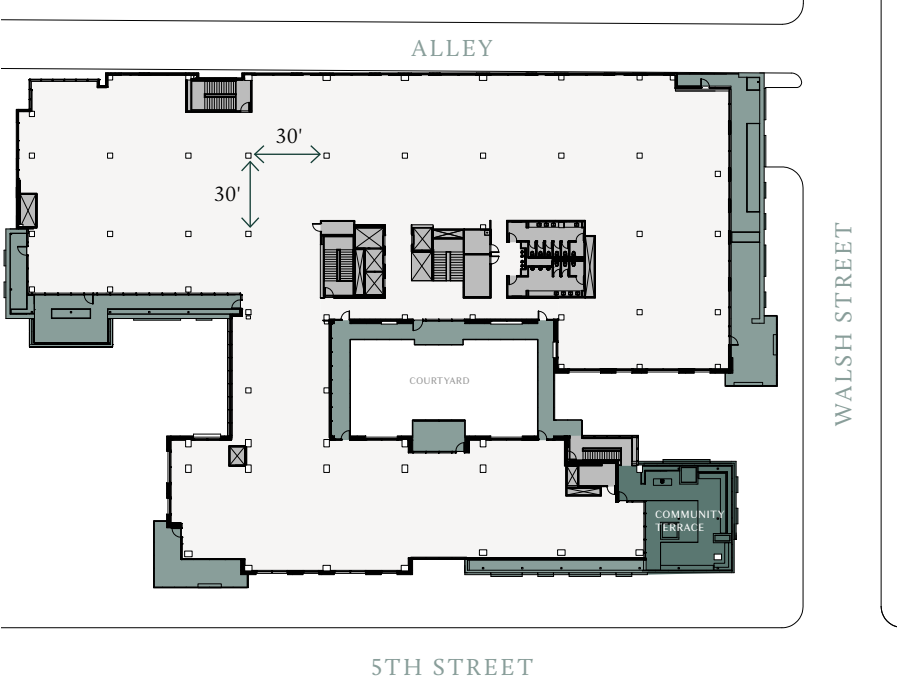
FLOOR 3
43,459 RSF

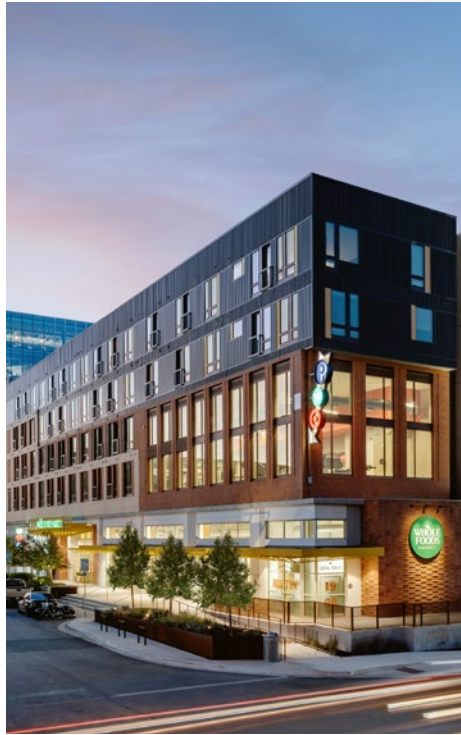


FLOOR 4
43,320 RSF



FLOOR 5
42,332 RSF





ABOUT ENDEAVOR

Born in Austin, Endeavor has grown into the largest full-service commercial real estate company in Central and South Texas. Our team of more than 195 professionals delivers specialized expertise in project leasing, tenant representation, property management, sales, and development. We offer extensive, market-specific knowledge covering retail, office, industrial, mixed-use, and multi-family projects.

endeavor-re.com

FIFTH & WALSH

Anne Swift, Principal
aswift@endeavor-re.com
512.682.5564

Travis Dunaway, Principal
tdunaway@endeavor-re.com
512.682.5570



FIFTHANDWALSH.COM